



Thriving, Christ-Centred, Learning Community

FROM OUR PRINCIPAL

As we begin the year together, I'm excited to introduce our 2026 theme: Grounded for Growth. It captures our deep hope as a school community, that we would be firmly rooted in Christ, in our values, and in strong relationships, so that growth is healthy, sustainable, and meaningful.

This week we welcomed Pastor Richie and Mr Calais from the Adventist Schools Australia head office, who spent time training and supporting our new teachers. They were genuinely impressed by the way they were greeted by our students and by the conversations they had about what students love most about Carlisle. They commented on the positive, Christ-like atmosphere, the coherence and unity within our team, and the general sense of joy and care around the campus, not to mention how clean and tidy the school looked! Thank you to our students, families and staff for the effort you put in every day.

On Saturday, we shared a wonderful Dedication Service, with strong student involvement. It is always special to see our church and school communities come together in worship and commitment for the year ahead.

It was also great to see so many families at our Welcome Dinner. These moments matter, building connections, meeting teachers, and setting shared expectations around clarity, consistency, and care across our campus.

PB4L Day was another highlight, with incredible house spirit on display. Our House Captains led with energy and encouragement as teams worked together through challenges, dances, and activities, finishing with a fun CARE chant involving both students and staff.

It has been a busy start to the term, but God has been clearly at work across our campus. A warm welcome to our new students and families we're glad you're here.



Dale Skinner

Term 1, Week 2
6 February , 2025

IMPORTANT DATES

SCHOOL FEES DUE
Friday, 6 February

P&F AGM
Monday, 10 February

RANDOM ACT OF KINDNESS DAY
Monday, 16 February

YEAR 10 CAMP
Wednesday, 18 February

COLOUR FUN RUN
Wednesday, 4 March

CARLISLE WAY

At Carlisle, we want to celebrate the positive ways our students demonstrate our core CARE values: Compassion, Achievement, Respect, and Effort. To do this, we are excited to introduce the Carlisle Way Award.

Each week, teachers will nominate students who show these values through their learning, interactions, and contributions to our school community. Each week highlights a different value, giving students the chance to reflect on and practise these important qualities in their daily lives.

Students who are selected for the Carlisle Way Award will be recognised at Monday morning assembly, receiving a special certificate and a \$5 Tuckshop voucher to spend on an item of their choice.

This programme is designed to celebrate positive behaviour, encourage students to strive for personal excellence, and inspire a culture of kindness, respect, and achievement across our school. We look forward to seeing our students grow and shine as they live out the Carlisle Way!



CARLISLE
ADVENTIST COLLEGE

AT CARLISLE WE

CARE

WE SHOW

COMPASSION
ACHIEVEMENT
RESPECT
EFFORT



NOTICES

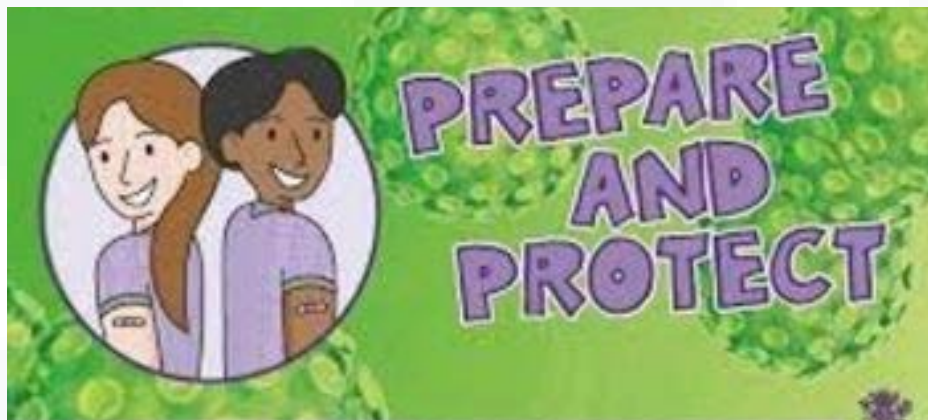
SCHOOL FEES

A friendly reminder that Term 1 & annual school fees are due by Friday, 6 February, unless you have commenced a payment plan. If you have any questions or need further information, please contact Kerrilyn, our Finance Officer at accounts@carlisle.qld.edu.au. Thank you for your prompt attention to this matter.



IMMUNISATION

Year 7 and Year 10 parents/guardians: A reminder to return your Student Immunisation Consent Cards ASAP. Your child will only be immunised if you complete, sign, and return the Immunisation Consent Card indicating 'Yes to Immunisation'. If you do NOT wish to participate sign and return the Immunisation Consent Card indicating 'No to Immunisation'. If you haven't received the Immunisation Consent Pack, please contact the school office.



NOTICES

NAPLAN

NAPLAN PRACTICE WINDOW

Years 3,5,7 and 9 will be preparing for NAPLAN between weeks 3-5. Student will have 2-3 practice sessions within this time to ensure confidence in navigating the NAPLAN process.

NAPLAN TEST WINDOW

NAPLAN test window for 2026 will be from 11/03/2026-23/03/2026 testing will occur for years 3,5,7 and 9. The school will aim to complete all testing withing the first week of the testing window, a schedule will be sent out once finalised.

All students needing reasonable adjustments (AARA) will be provided with appropriate relevant support.

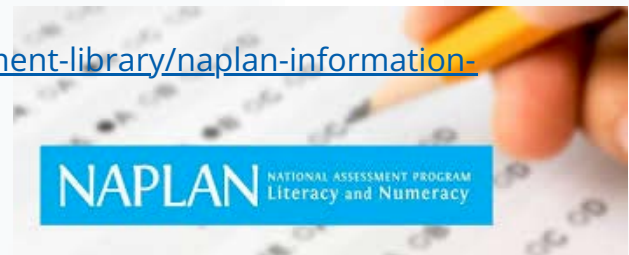
If your child is exempt/withdrawn from naplan, they will still be present in class during the practice sessions completing alternative tasks.

Please use the below link to access the NAPLAN brochure.

<https://www.nap.edu.au/docs/default-source/default-document-library/naplan-information-brochure-for-parents-and-carers.pdf>

<https://nap.edu.au/naplan/public-demonstration-site>

Hard copy brochures will be sent home with students.



STUDENT DIARY'S

Student diaries have arrived and will be issued to students throughout next week. These diaries are an important information resource and will be used regularly by students, parents and teachers to support communication, organisation and learning.

We encourage families to take time to look through the diary with their child and become familiar with the key information included. Students are expected to bring their diary to school each day and take care of it throughout the year.

If a diary is lost, a replacement can be purchased from the school office at a cost of \$15.

Students and staff will be explicitly taught the expectations around diary usage including the What, Why & Hows.

A copy of this learning can be sent to parents upon request.



CHAPLAINCY

A SABBATH TO REMEMBER

What a truly beautiful and meaningful Sabbath we shared at our School Dedication Service. Coming together as one school community students, families, staff, and friends was a gentle yet powerful reminder of the strength, warmth, and shared purpose that make our school such a special place. The atmosphere of reflection, gratitude, and connection set the tone for the year ahead and reaffirmed why community sits at the heart of all we do.

Throughout the service, we reflected on last year's service trip, taking time to celebrate the courage and compassion shown by our students. As they stepped outside their comfort zones, they embraced opportunities to serve others with open hearts, humility, and generosity. These experiences challenged them, shaped them, and helped them grow not only in confidence, but in empathy and understanding. It was a joy to recognise how these moments of service have contributed to who our students are becoming and the values they are learning to live out each day.

As we formally dedicate the year ahead, we place our school in God's hands, asking for His guidance and blessing over every student, every family, and every staff member. This act of dedication is a reminder that we do not walk this journey alone, and that our work, relationships, and learning are grounded in faith, purpose, and care for one another.

Our 2026 theme, Grounded in Growth, was woven throughout the service and invites us to reflect on the importance of strong foundations. Just as healthy growth depends on deep and steady roots, our students flourish when they are grounded in faith, supported by genuine care, and connected to a community that believes in them. These roots provide stability, resilience, and confidence, enabling our students to grow academically, socially, emotionally, and spiritually.

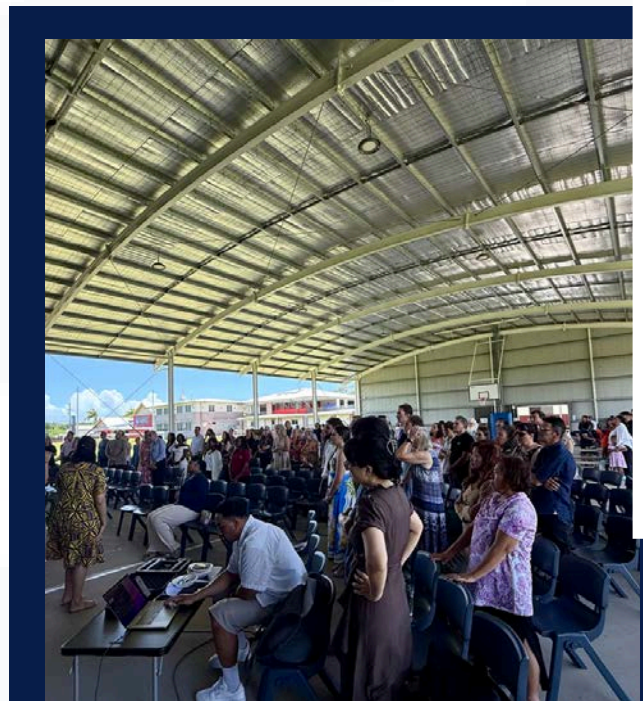
This Sabbath served as a beautiful reminder of what truly matters. At the centre of everything we do are our students their stories, their growth, their wellbeing, and their future. As we move forward into the year ahead, we do so with gratitude, hope, and a shared commitment to nurturing each child as they continue to learn, grow, and thrive within our school community.



DEDICATION SERVICE



"So then, just as you received Christ Jesus as Lord, continue to live your lives in him, rooted and built up in him, strengthened in the faith as you were taught, and overflowing with thankfulness."
Colossians 2:6-7



SPORTS



This term we are hosting a Monty's Slime Fun Run for our students and raising funds for our sports department.

How Do We Fundraise?

It's super easy! Go to myprofilepage.com.au, click register and create a cybersafe online profile for your child. Once you're set up, share the link with family and friends to collect online donations. Please note this is an online-only fundraiser. Any cash donations must be converted online before Friday, 6/3/26.

Raise just \$10 online and receive a prize for your awesome fundraising efforts! When the fundraiser finishes, students will need to login and order prizes based on their donations. Students can mix and match up to a total of five prizes based on their donations or choose to give back to one of the six amazing causes - The Great Barrier Reef Foundation (coral planting or turtle protection), Carbon Neutral (tree planting), OzHarvest (providing meals to those in need), The Starlight Foundation (bring happiness to sick kids) or Dolly's Dream (end bullying in schools).

Event Information

04/03/2025

12:00 – 2:45pm

Carlisle Adventist college, Shed & Oval.

- Wear a white shirt to make the colour pop!
- Each student will also receive a pair of sunglasses and a headband!
- Students are required to wear closed-in shoes!
- Students will be covered in non-toxic, biodegradable, water-based slime!



We look forward to seeing the students all bright and colourful on the day of our Monty's Slime Fun Run!

For further information, please contact Miss Mohr via noema.mohr@carlisle.qld.edu.au

PRIMARY



GRIP LEADERSHIP
SITUATION 4:
You have told the teacher that you will help pack up after assembly. However, your friends tell you they are going to play footy as soon as assembly ends. They want you to leave the assembly straight away and be on their team. At the end of assembly, your friends tell you that you have to stay and pack up because that's what you told the teacher you would do. Which way are you showing integrity?



We are excited to share an opportunity for our primary students through GRIP Leadership, an independent organisation dedicated to developing young leaders, with a strong focus on schools and the education sector.

GRIP Leadership is best known for its Student Leadership Conferences, which are designed specifically for children and young people. These sessions are engaging, practical and highly interactive, giving students the chance to explore what leadership looks like in everyday school life. Each year, tens of thousands of students across Australia take part in GRIP programs and consistently report positive, confidence building experiences.

The presentations are carefully tailored for schools and focus on age appropriate leadership skills such as responsibility, teamwork, kindness, initiative and service to others. Importantly, GRIP Leadership places a strong emphasis on values, encouraging students to lead with integrity, respect and care for those around them.

GRIP Leadership is widely endorsed by educators, school leaders, politicians and business professionals across Australia, reflecting the quality and impact of their programs.

We look forward to the positive learning and leadership growth this experience will bring to our primary students as they continue to develop confidence, character and a sense of responsibility within our school community.

PRIMARY



The start of a new school year is always an exciting time for our youngest learners. For many primary students, it's a chance to reunite with friends, meet new teachers, and explore fresh learning opportunities. While excitement is high, it's normal for children to feel a little nervous as they adjust to new routines and expectations.

Parents and teachers can support students by keeping mornings calm, encouraging conversations about what they're looking forward to, and celebrating small achievements. Consistent routines around homework, meals, and sleep help children feel secure and ready to learn.

At school, teachers focus on helping students settle in gently, fostering friendships, and building a sense of belonging. Activities that allow students to share about themselves, work together in teams, and practice daily routines help create a positive, confident start to the year.

With patience, encouragement, and a focus on connection, our primary students quickly find their rhythm and step into the year with curiosity and joy.

SECONDARY



For secondary students, returning to school brings new opportunities, challenges, and responsibilities. Older students often face increased workloads, elective choices, and changes in social dynamics, which can feel overwhelming at first.

Supporting students through this transition involves balancing independence with guidance. Encouraging them to stay organized, set realistic goals, and seek help when needed can make the adjustment smoother. Teachers also play a key role in helping students reconnect with peers, navigate new subjects, and settle into routines.

A focus on wellbeing is just as important as academic success. Creating time for friendships, extracurricular activities, and personal reflection helps students manage stress and maintain motivation. With support from home and school, secondary students quickly regain confidence, build resilience, and embrace the opportunities a new school year brings.



WELCOME DINNER



This week we had the pleasure of hosting our annual Welcome Dinner and Information Sessions. Despite the wet weather, it was wonderful to see so many families join us as we began the year together.

Parents had the opportunity to meet with teachers, explore their children's classrooms, and gain a deeper understanding of the year ahead. The evening concluded with a shared meal, providing a relaxed time of fellowship and connection within our school community.

It was a meaningful way to start the year off strong, GROUNDED for Growth, as we continue to build relationships and support one another throughout the year.

Thank you to all who attended and helped make the evening such a positive start to 2026.



PB4L



Last week we proudly celebrated our annual PB4L Fun Day, a whole school event grounded in growth and focused on strengthening our CARE values of Compassion, Achievement, Respect and Effort.

Throughout the day, students rotated through a range of engaging craft, sport and dance activities in their house groups. These mixed age groupings encouraged teamwork, inclusion and leadership, giving students the opportunity to connect with peers across year levels in a positive and supportive environment. The shared sausage sizzle lunch was a highlight, providing a relaxed time for students and staff to come together, build relationships and enjoy each other's company.



A special moment of the day was when students were given a seed to take home and plant. This small but meaningful gesture symbolised our school theme of growth and served as a reminder that when we nurture CARE in ourselves and others, positive growth follows. PB4L Fun Day was a wonderful celebration of community, connection and the values that guide our school each day.

OSHC

Dear Parents and Families,

Welcome to our Outside School Hours Care (OSHC) service! We are so pleased to have your family as part of our community and look forward to supporting you and your children throughout the year. Our OSHC program provides a safe, caring, and engaging environment for children outside of regular school hours, while supporting families with busy work schedules.

OUR SERVICE HOURS

Before School Care

Monday to Friday: 6:30 am – 8:15 am

We also provide a healthy breakfast for children to choose from between 7:00 am and 8:00 am.

After School Care: Monday to Thursday: 3:00 pm – 6:00 pm and Friday: 3:00 pm – 5:30 pm

AFTERNOON ROUTINE

- Children arrive and settle in
- Homework time
- Group time and planned activities
- Healthy afternoon tea around 4:00 pm
- Indoor and outdoor free play after afternoon tea

VACATION CARE (School Holidays) : Monday to Thursday: 6:30 am – 6:00 pm

Friday: 6:30 am – 5:30 pm

We have 30 places available each day. Extra places may open if additional educators are available. Bookings are essential as places fill quickly.

Our educators are committed to creating a space where children feel safe, valued, and supported. We work closely with families and the school to ensure the best possible care for every child.

We look forward to a wonderful year together!

Warm regards,

Sandra Wilde

OSHC Service Coordinator

[Parent Portal](#)



THIS WEEK IN WALLABIES

This week, our Wallabies have enjoyed a busy and engaging week full of connection, creativity, and play-based learning.

We have loved spending time with our Kindy friends, where the children enjoyed shared play experiences such as building train tracks and exploring colouring activities. These moments support social development, cooperation, and growing friendships across the year levels.



Back in the Wallabies room, the children have been especially drawn to outdoor and sensory play. Throughout the week, a range of sensory materials including rice, cornflour, and pasta have been provided, encouraging exploration, imagination, and fine motor skill development through child-led play.

Our Wallabies demonstrated wonderful creativity as they used buckets, shovels, and trucks to create their own cooking spaces and construction sites. These experiences allowed children to work together, problem-solve, and bring their ideas to life.

It has been a joy to see the children so engaged, curious, and confident as they continue to learn and grow together in our ELC community.



TUCKSHOP

Operating hours 8:15 - 1PM
Monday, Wednesday & Friday

Beverages	
Fruit Juice Popper Variety (Apple, Apple & Black current, Orange, Golden Pash)	\$2.00
Glee – Sparkling Fruit Juice (Grape, Raspberry, Tropical)	\$3.00
Sparkling Water	\$2.00
Water	\$2.00
Breaka Milk (Chocolate or Strawberry)	\$2.00
Up&Go Variety (Caramel, Chocolate, Strawberry, Banana, Vanilla)	\$2.00
Dairy Free Up&Go Variety (Chocolate & Strawberry)	\$2.00
Smoothies (Mixed Berry, Malt & Honey, Choc Banana)	\$4.00
Dairy Free Smoothies (Mixed Berry, Malt & Honey Choc Banana)	\$4.00

Snack Attack	
Seasonal Fruit (apple: red or green/ banana / orange)	\$2.00
Seasonal Fruit Salad Cup (Watermelon, Strawberries, Blueberries, Orange, Apple & Banana)	\$3.00
Jelly Cup (Raspberry, Tropical, Orange)	\$2.00
Boiled Egg	\$2.00
Chips Variety (Pringles – Sour Cream & Onion, Salt & Vinegar, Original, Veggie Straws – Sourcream & Herb, Sunbites – Sour Cream & Chives, Sea Salt, Cheddar & Chives, Potato Stix - Original)	\$2.00
Popcorn Variety (Original, Sweet & Salty)	\$2.00
Cookies x 2	\$1.00

Frozen Delights	
Mini Frozen Yogurt	\$1.50
Frozen Yogurt Cup	\$3.00
Crush Frenzy	\$0.50
Shakey Shake	\$1.00
Zooper Dooper	\$0.50
Frozen Popper	\$2.00
Zooper Dooper - Classroom Pack	\$10.00

Everyday Basics	
Fresh Sandwich (vegemite, vegemite & cheese, jam, honey or spaghetti)	\$2.50
Toastie (vegemite & cheese, cheese, cheese & tomato or spaghetti)	\$3.00
Fresh Salad Sanga	\$3.50
Fresh Salad Roll	\$3.50
Fresh Salad Wrap	\$3.50

Everyday Salad Variety	
Garden Salad Bowl (lettuce, tomato, red onion, cucumber, capsicum, carrot, optional dressing)	\$5.00
Caesar Salad Bowl (lettuce, red onion, cucumber, croutons, capsicums, boiled egg and dressing)	\$5.00

Sweet Treats	
Pikelets (2) with Jam	\$2.00
Banana Bread	\$2.00
Choccy Weetbix Slice	\$2.00
Carrot Cake	\$2.00
Fairy Scone	\$2.00
Muesli Slice	\$2.00

Hot Box Options		
Monday		
¼ Pizza (Veggie Sensation, Cheese)	\$5.00	All Year Availability
Garlic Bread	\$1.00	
Wednesday		
Dog Roll	\$2.50	All Year Availability
Spinach & Feta Roll	\$4.00	
Vegetarian Roll	\$4.00	
Veggie Burger	\$6.00	
Schnitty Burger	\$6.00	Term 1 & 4
Potato Bake	\$5.00	Term 2 & 3
Friday		
Fried Rice	\$5.00	All Year Availability
Garlic Bread	\$1.00	
Wedges with Sauce	\$5.00	Term 1 & 4
Loaded Wedges (Sour Cream, Cheese & Sweet Chilli)	\$5.00	
Spaghetti Bolognese	\$5.00	
		Term 2 & 3

Daily Combo's		
All Combo's include your choice of a drink from our popper or Up&Go flavoured options and a treat from our sweet treat's selection.		

Monday		
Pizza Hut Combo ¼ Slice of Pizza (Veggie Sensation or Cheese) and Garlic Bread.	\$10.00	All Year Availability

Wednesday		
Burger Combo Burger Bun with Choice of Veggie Patty or Schnitty, Fresh Salad, Cheese and Choice of Sauce.	\$10.00	Term 1 & 4

Roll Combo Choice of Vegetarian Roll, Dog Rolls or Spinach & Feta Roll, Served with Wedges, and Choice of Sauce.	\$10.00	All Year Availability
---	---------	-----------------------

Potato Bake Combo Homemade Potato Bake served with Garlic Bread.	\$10.00	Term 2 & 3
---	---------	------------

Friday		
Wedge Combo Loaded Wedges with Sour Cream, Cheese & Sweet Chilli	\$10.00	Term 1 & 4

Fried Rice Combo Vegetarian Fried Rice served with Garlic Bread.	\$10.00	All Year Availability
---	---------	-----------------------

Spaghetti Bolognese Combo Homemade Vegetarian Spaghetti Bolognese served with Garlic Bread.	\$10.00	Term 2 & 3
--	---------	------------

Combo Upgrade	
Upgrade choice of beverage to Glee	+\$1.00

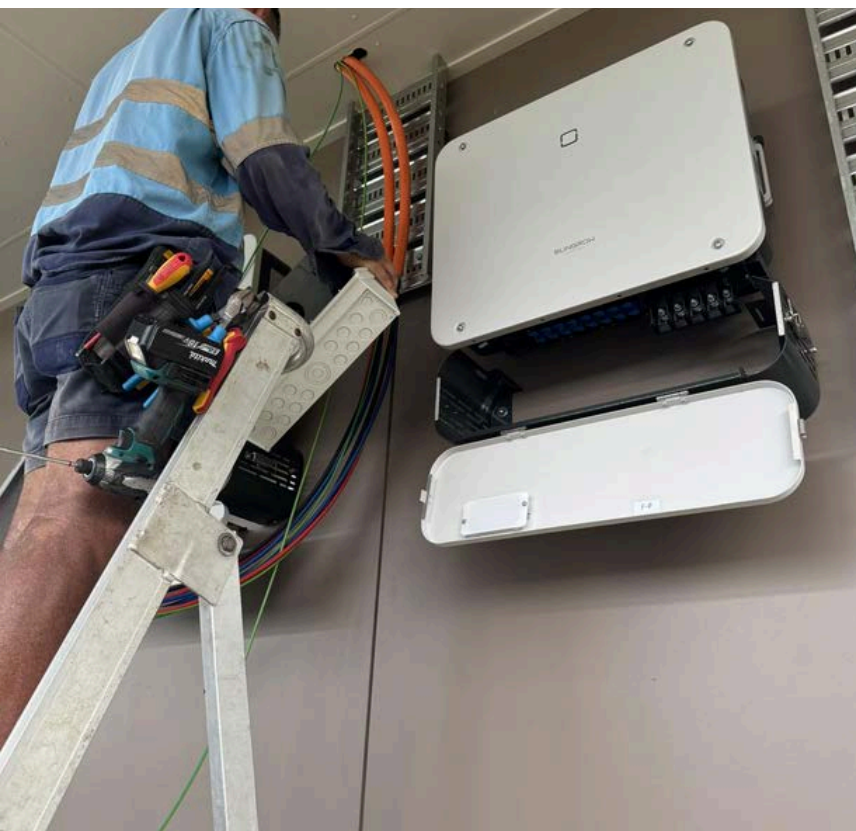
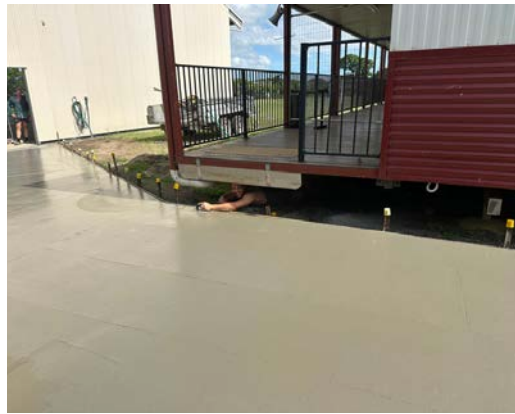
Essential Lunch Packs (Everyday)	
Spread Sandwich (Vegemite, Jam or Honey), Piece of fruit (apple, orange or banana), Veggie snack (carrot sticks or cucumber rounds), a sweet treat, choice of chip or popcorn variety, popper or Up&Go	\$10.00

Online Ordering via Flexischools App
(Preferred Method)

Over the Counter Ordering
(prior to school commencing between 8:15am - 8:40am)



RENOVATIONS



Our school grounds are buzzing with activity as several exciting improvements take shape. One of the most noticeable additions is our new solar panels. These are currently being wired and are expected to be fully operational very soon, helping us take a big step forward in sustainability and energy efficiency.

In addition, we've added new concrete at the back of the school. This improvement will make moving between classrooms and the shed much easier and safer for students and staff alike.

Looking ahead, we have more updates planned. Over the next school holidays, the shed will undergo further painting and renovations, giving this space a fresh, welcoming look for everyone who uses it.

These upgrades are all part of our ongoing commitment to creating a safe, modern, and environmentally conscious learning environment. We're excited for our students and staff to enjoy these enhancements in the months ahead.



STAFF DEVELOPMENT

Over the past few weeks, learning has not been limited to our students. Our staff have also been actively engaged in a range of professional learning opportunities as we prepare for the year ahead.

Several targeted programs have been running, with relevant staff working alongside skilled and experienced trainers. These sessions have focused on building confidence, strengthening practice and ensuring consistency across our school.

Investing time in staff development is an important part of our commitment to providing the best possible learning environment for our students. These opportunities allow our team to reflect, collaborate and continue to grow, so they are well equipped to support every child in their care throughout the year.

We are grateful for the dedication and willingness of our staff to keep learning, and we look forward to seeing the positive impact this continued professional growth will have across our school community.



*Proverbs 27:17
"As iron sharpens iron, so
one person sharpens another."*



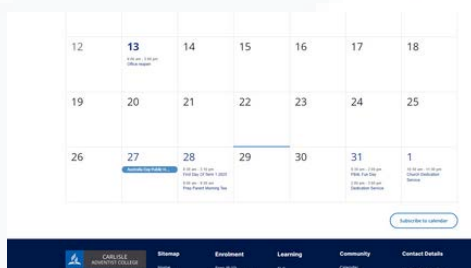
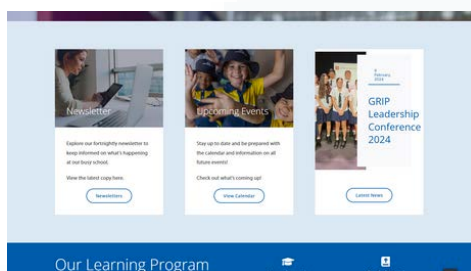
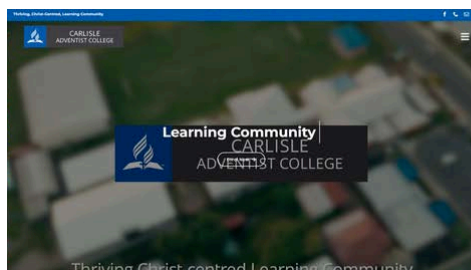
CALENDAR

In an exciting step forward, Carlisle is going digital with our calendar this year! This new approach will allow our school and local community to stay better connected and informed about the wide range of events and activities happening throughout the year.

By taking our calendar online, we aim to create a more accessible and inclusive way for everyone, parents, students, and community members alike, to participate in the life of Carlisle. Whether it's school assemblies, sports carnivals, performances, or community engagements, you'll have all the details at your fingertips.

Our Calendar can be accessed through our website at <https://www.carlisle.qld.edu.au/>

THU	FRI	SAT
30	31 8:30 am - 2:00 pm PB4L Fun Day 2:00 pm - 3:00 pm Dedication Service	1 10:30 am - 11:30 pm Church Dedication Service
6	7 8:30 am - 3:00 pm Primary Swimming Begins	8
13	14	15
20	21	22



Step 1 - Head to our website at <https://www.carlisle.qld.edu.au/>

Step 2 - Scroll down to find Upcoming Events

Step 3 - Click on View Calendar

Step 4 - Scroll down to bottom to find

Subscribe to calendar

Google Calendar

iCalendar

Outlook 365

Outlook Live

Export .ics file

Export Outlook .ics file

MUSIC TUTORS



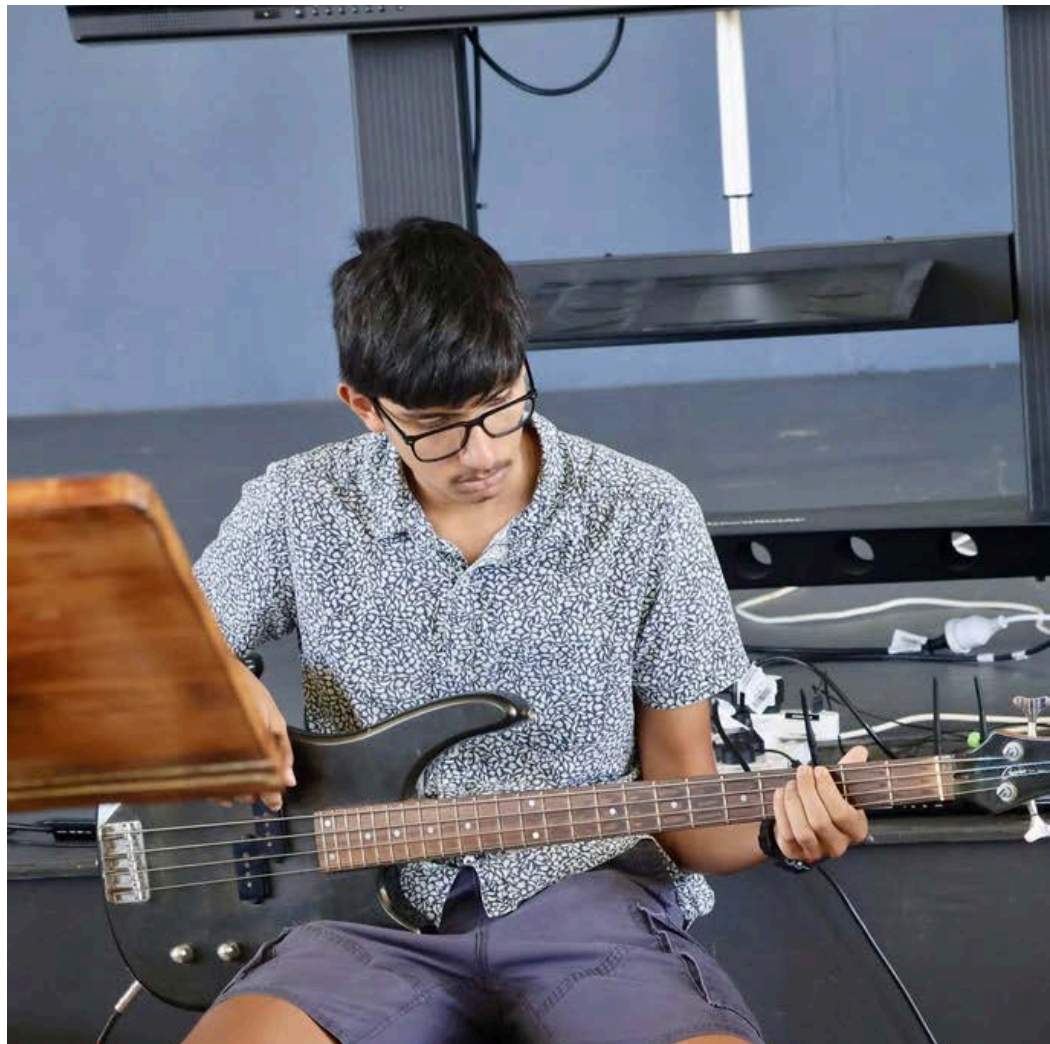
We are proud to continue providing music lessons on campus, creating a convenient and supportive space for students to enhance their instrumental skills. With a variety of expert tutors available, your child can develop their passion for music right here at school.

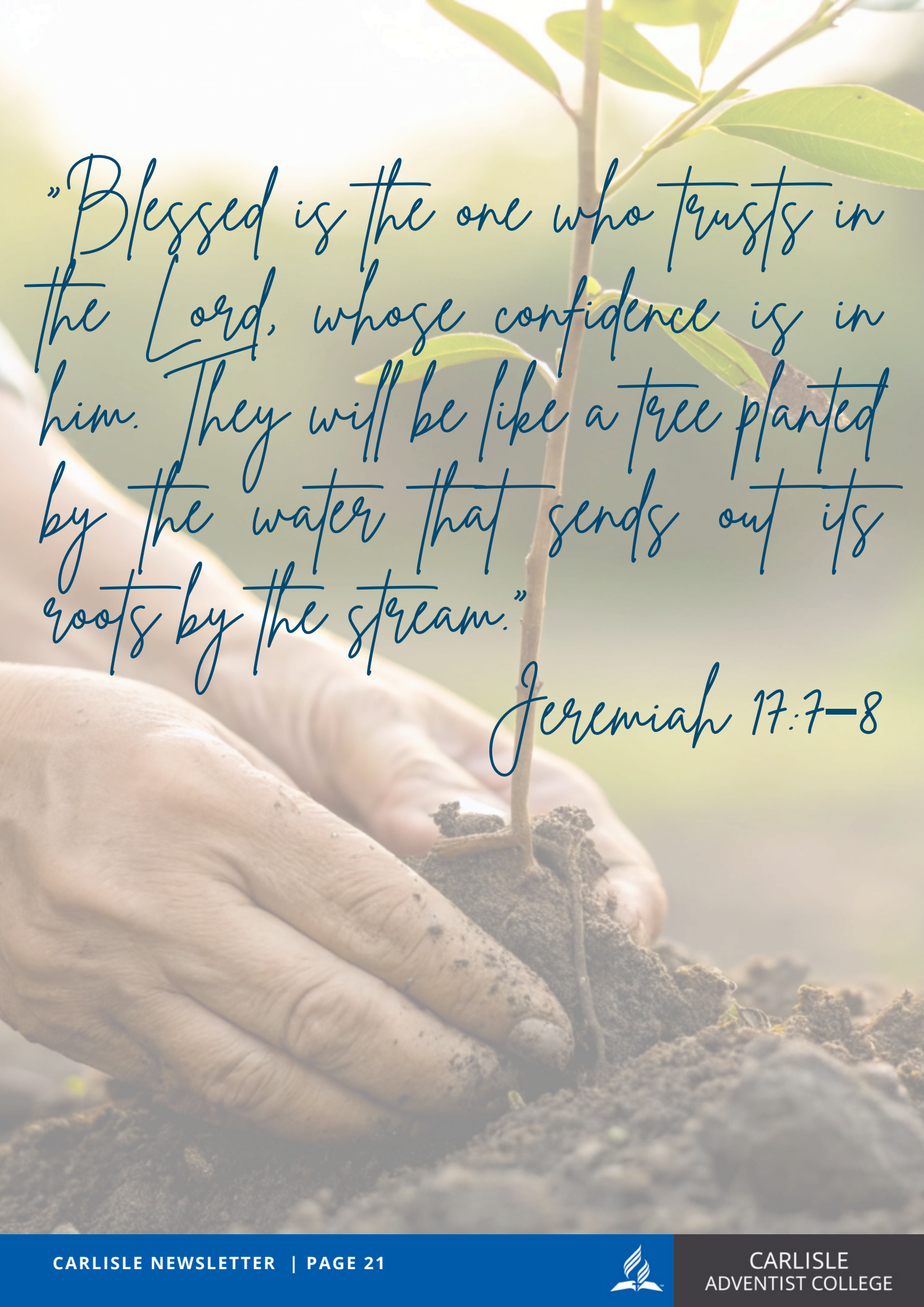
Contact your preferred instructor today to arrange a session and let the music inspire!

Elliott Blackler: Guitar (Acoustic/Electric/Bass)
Music Theory
(Tuesday's)
\$35 for 30min
0426 690 602

Gwenda Aay:
Piano/Brass/Woodwind
(Wednesday's)
\$30 for 30min
0412 947 181

Mary Hawkins: Piano
(Friday)
\$25 for 30min
0408 740 412





"Blessed is the one who trusts in the Lord, whose confidence is in him. They will be like a tree planted by the water that sends out its roots by the stream."

Jeremiah 17:7-8



DISCOVER THE EXTRAORDINARY IN THE EVERYDAY

Hooked

THE WHIMSICAL WORLD OF CAITLIN RAMSAY



A posthumous exhibition celebrating works by Mackay artist Caitlin Ramsay, where yarn is transformed into vivid expressions of life both real and fantastical.



28 JAN-1 MAR, 2026
LAGOONS GALLERY
BOTANIC GARDENS CAFE

WED-FRI 9AM-2PM
SAT-SUN 8AM-3PM

caitlinramsay.com.au

